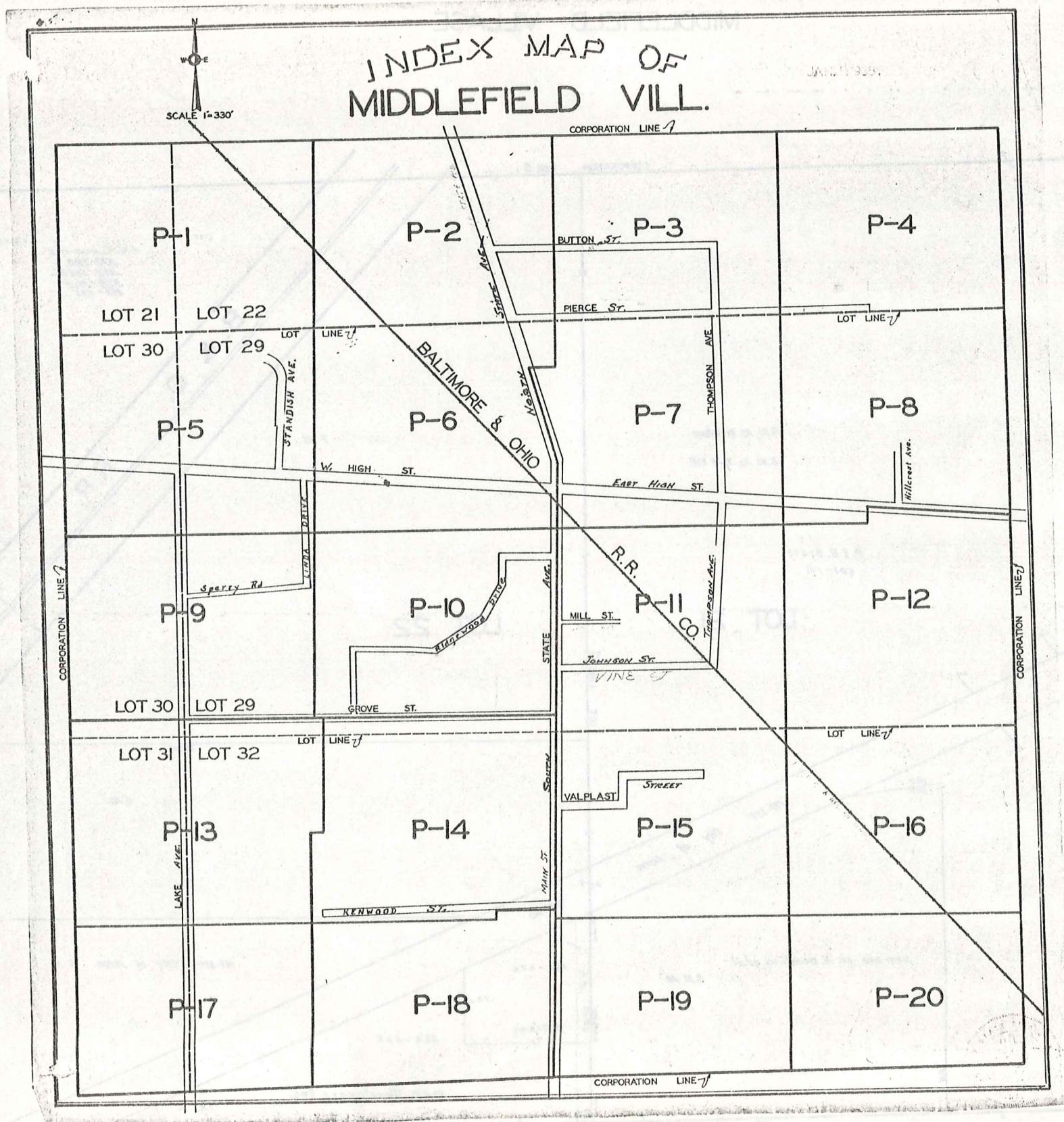


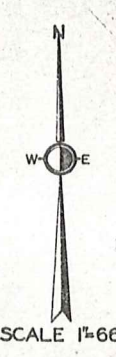
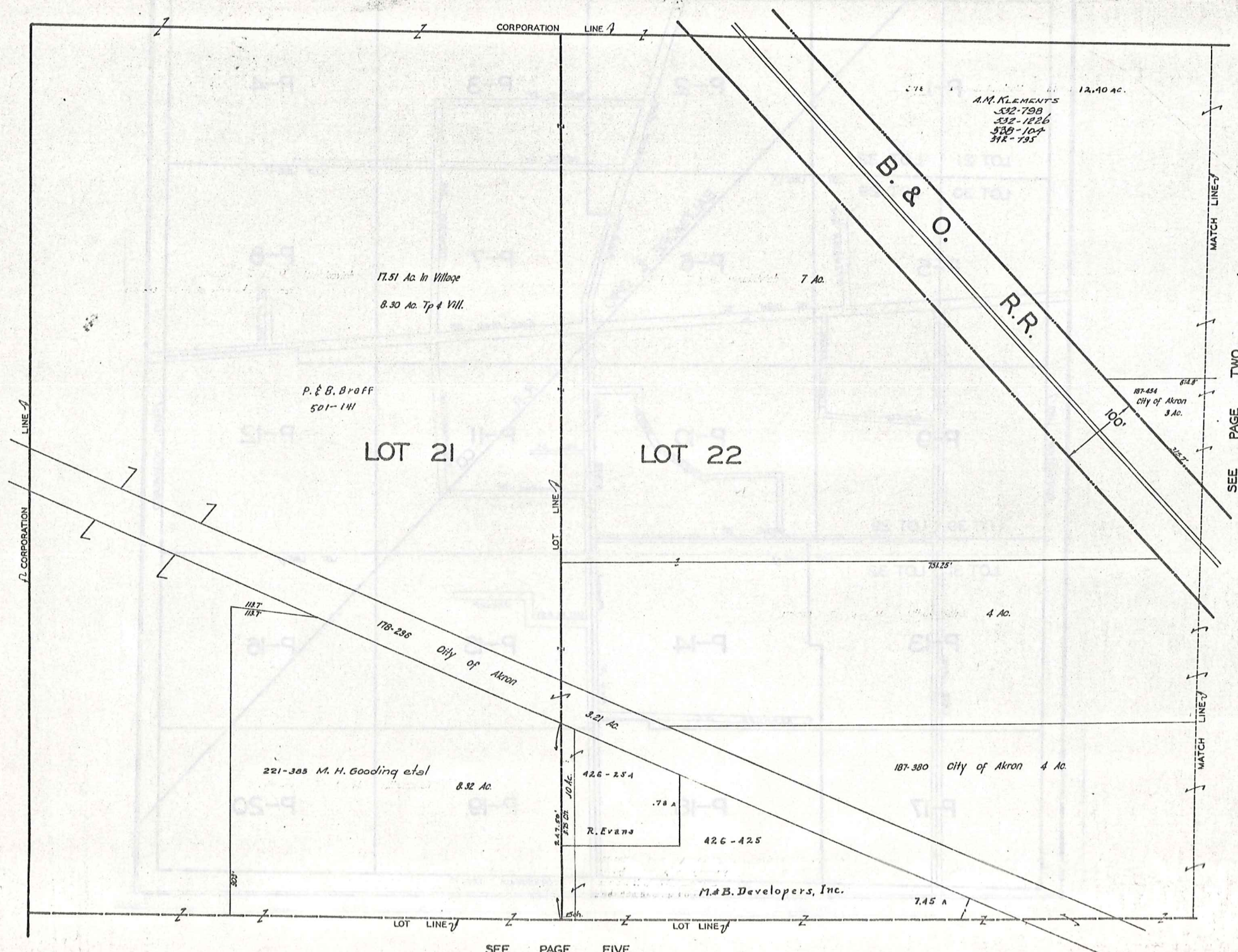
INDEX MAP OF MIDDLEFIELD VILL.

JAN 11 1929

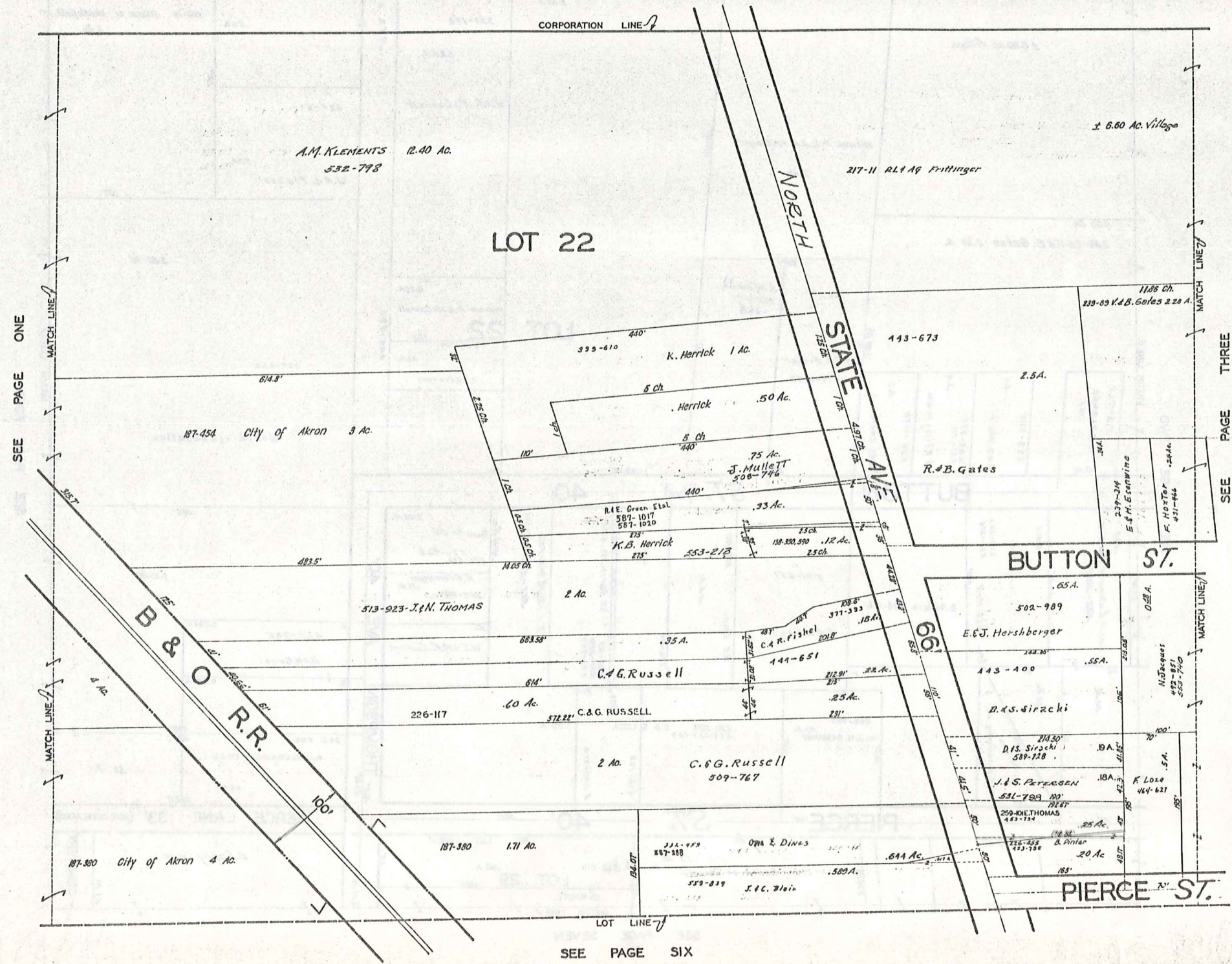
SCALE 1" = 330'



MIDDLEFIELD VILLAGE



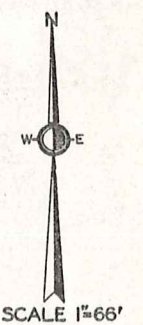
JAN. 1, 1979



SEE PAGE ONE

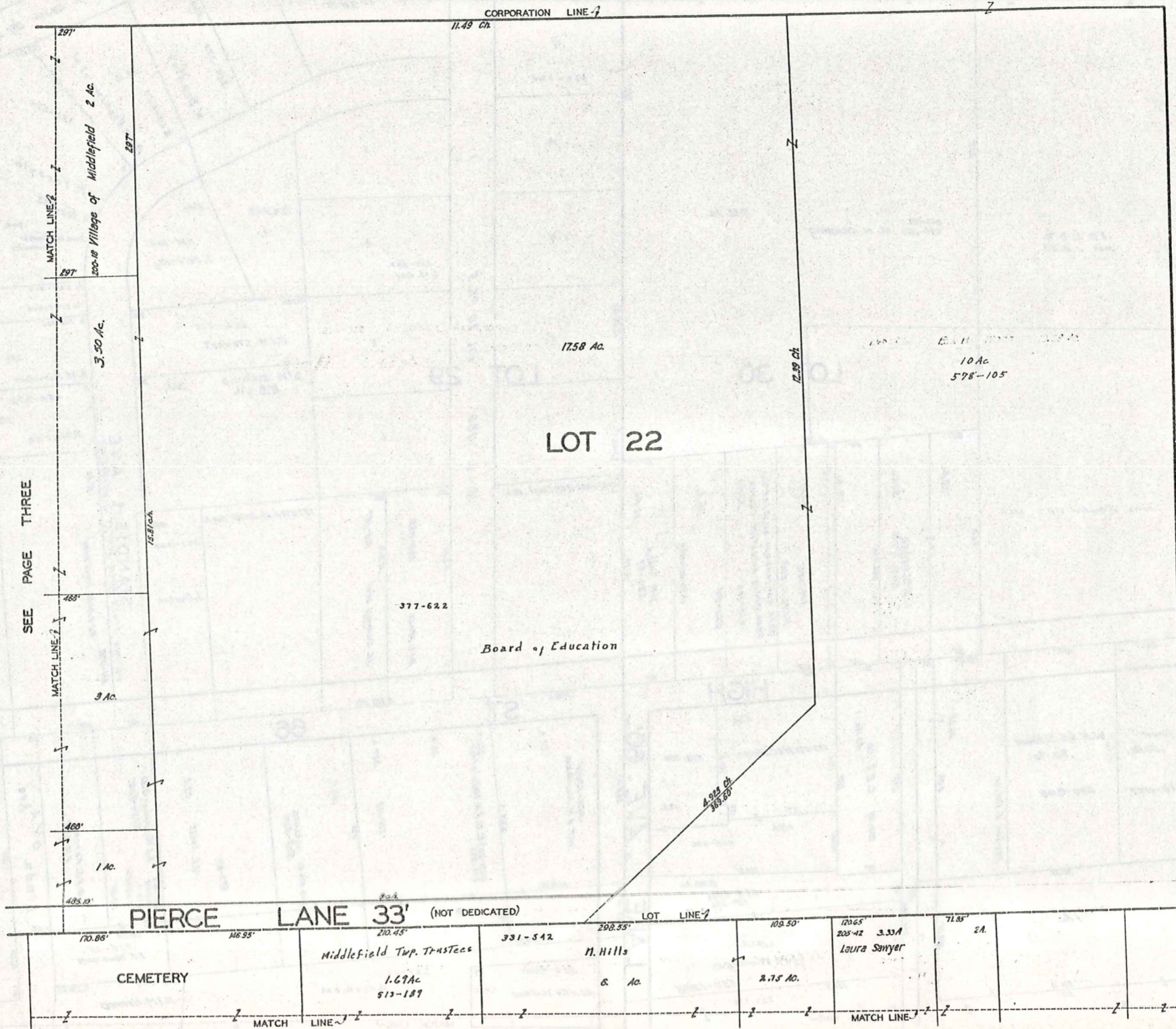
SEE PAGE THREE

SEE PAGE SIX

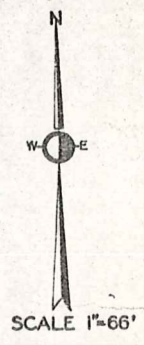


SCALE 1"=66'

JAN 1, 1970



SEE PAGE THREE

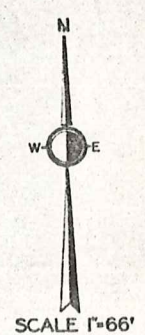
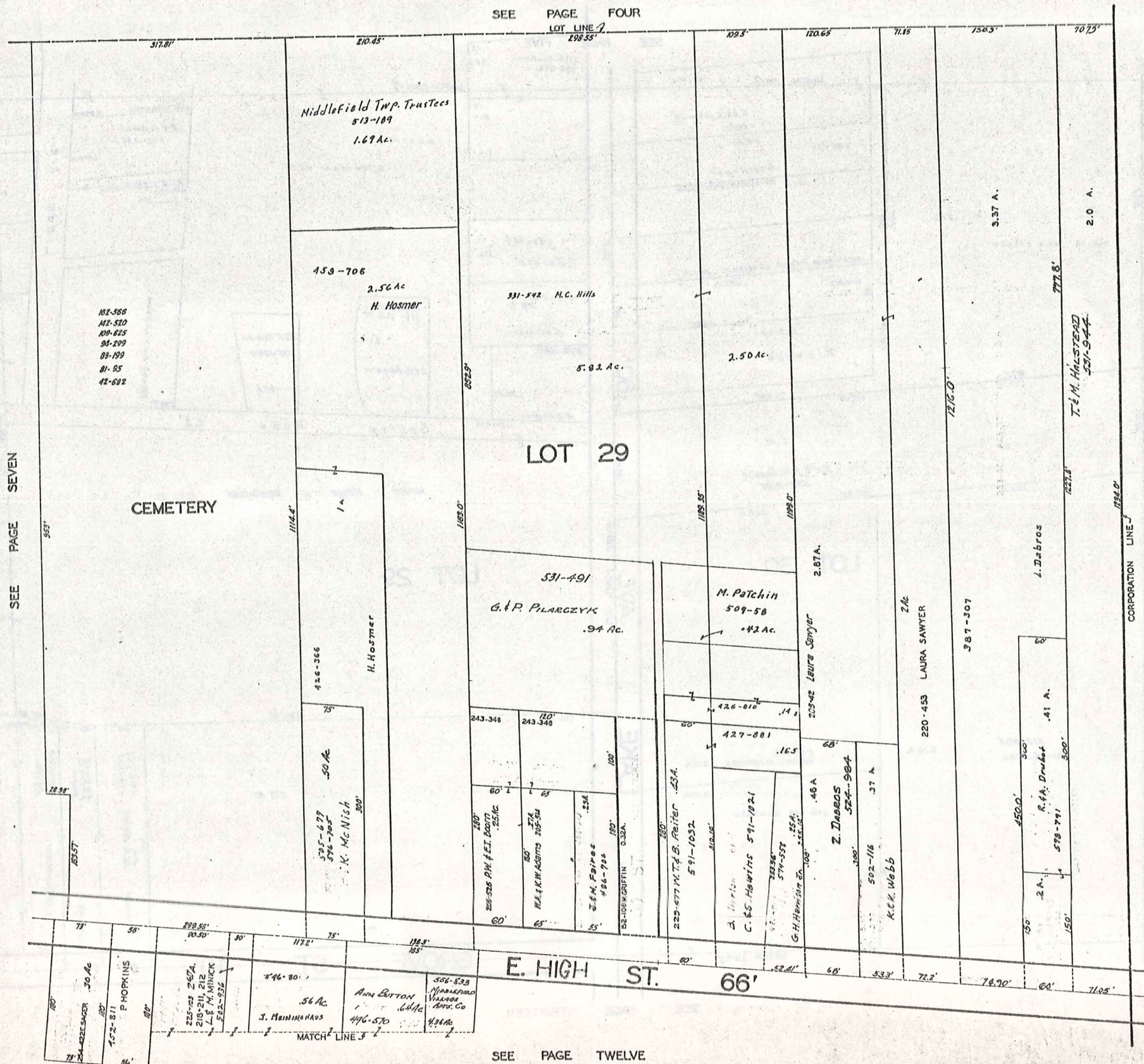


SCALE 1"=66'

JAN .1, 1977

SEE PAGE EIGHT

SEE PAGE FOUR
LOT LINE 1

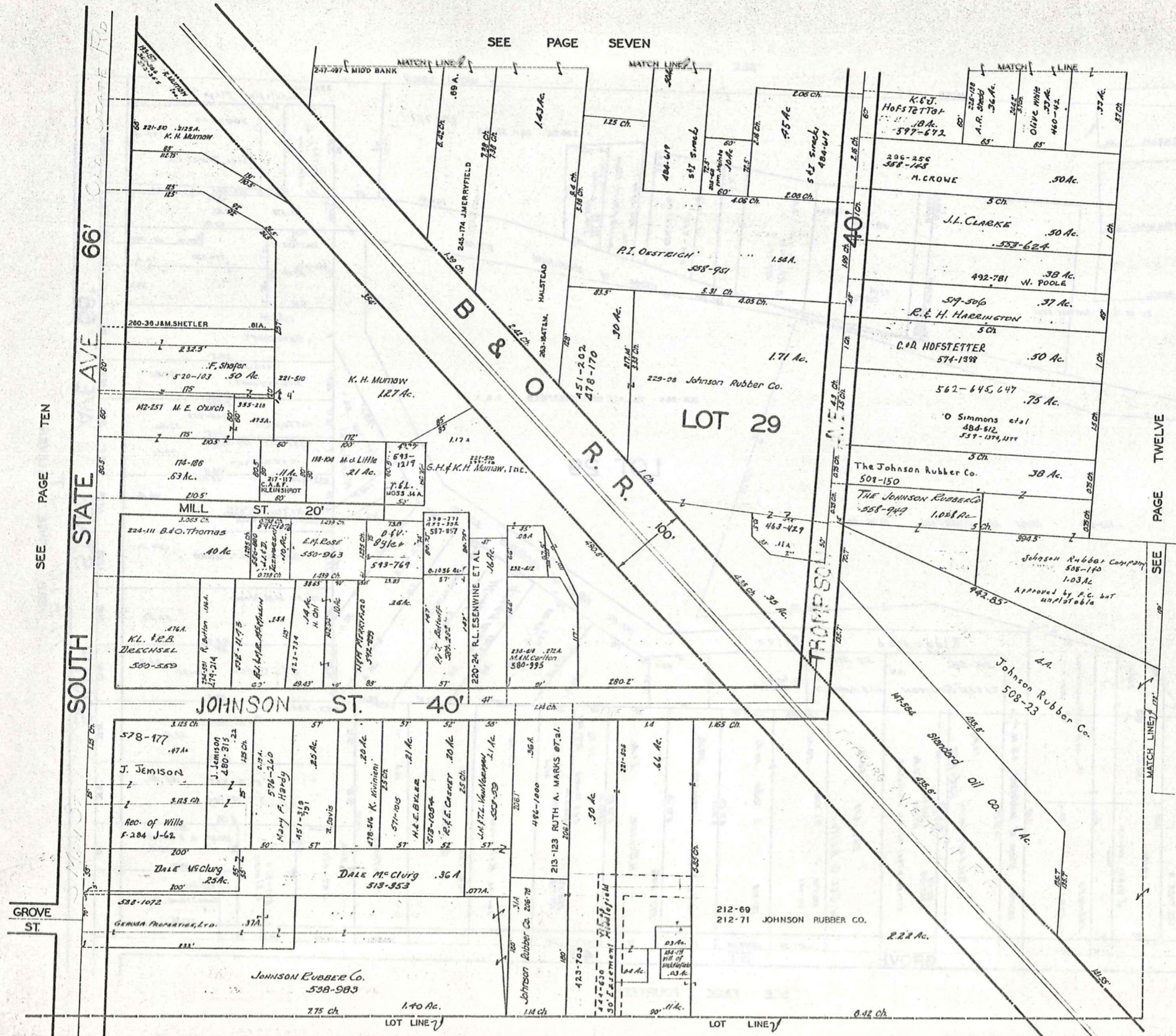


JAN 1, 1971

SEE PAGE SEVEN

SEE PAGE TWELVE

MIDDLEFIELD VILLAGE



SEE PAGE TEN

SEE PAGE SEVEN

SEE PAGE TWELVE

SEE PAGE FIFTEEN

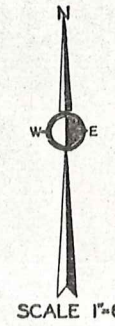
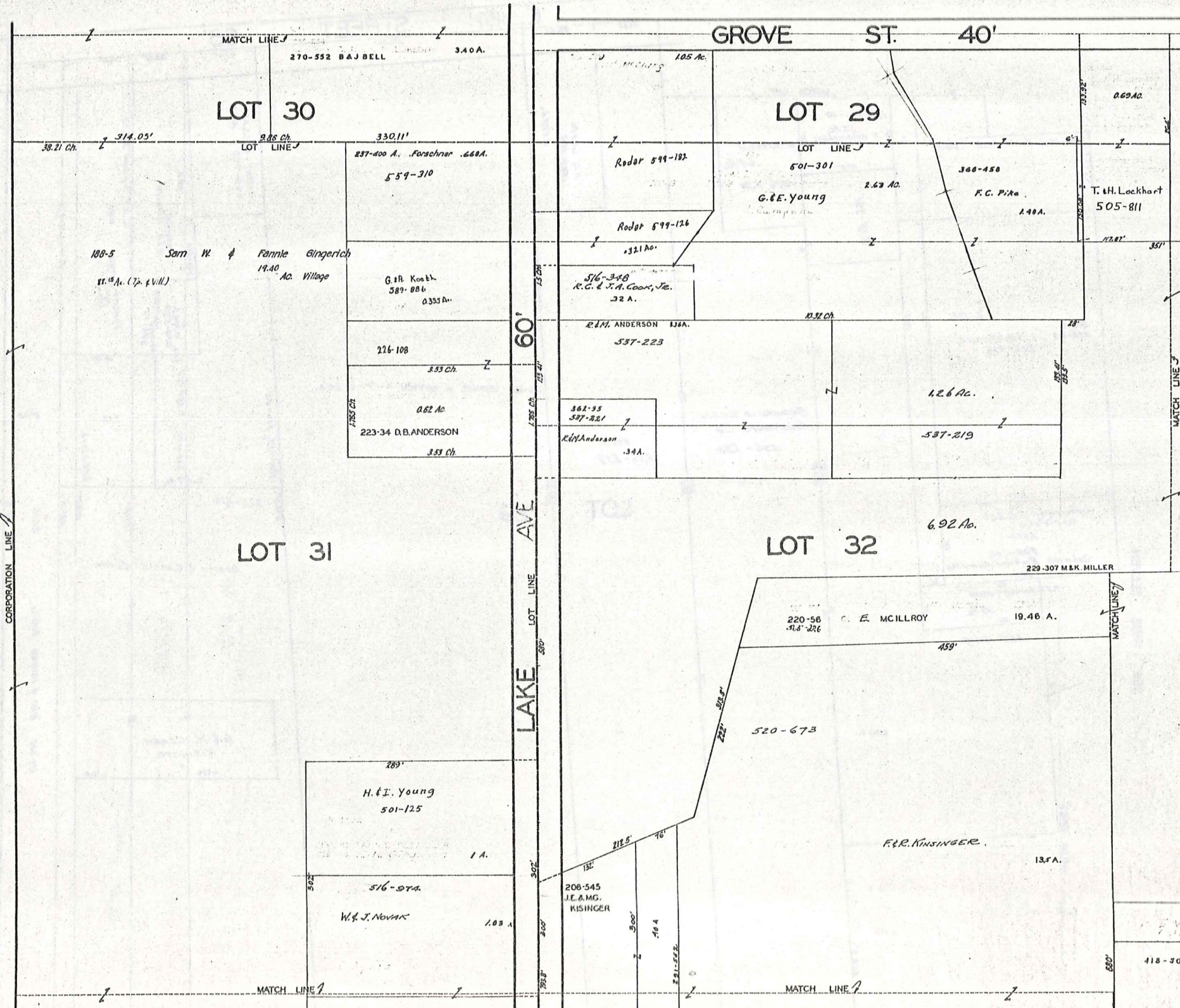


SCALE 1" = 66'

JAN. 1, 1977

MIDDLEFIELD VILLAGE

SEE PAGE NINE

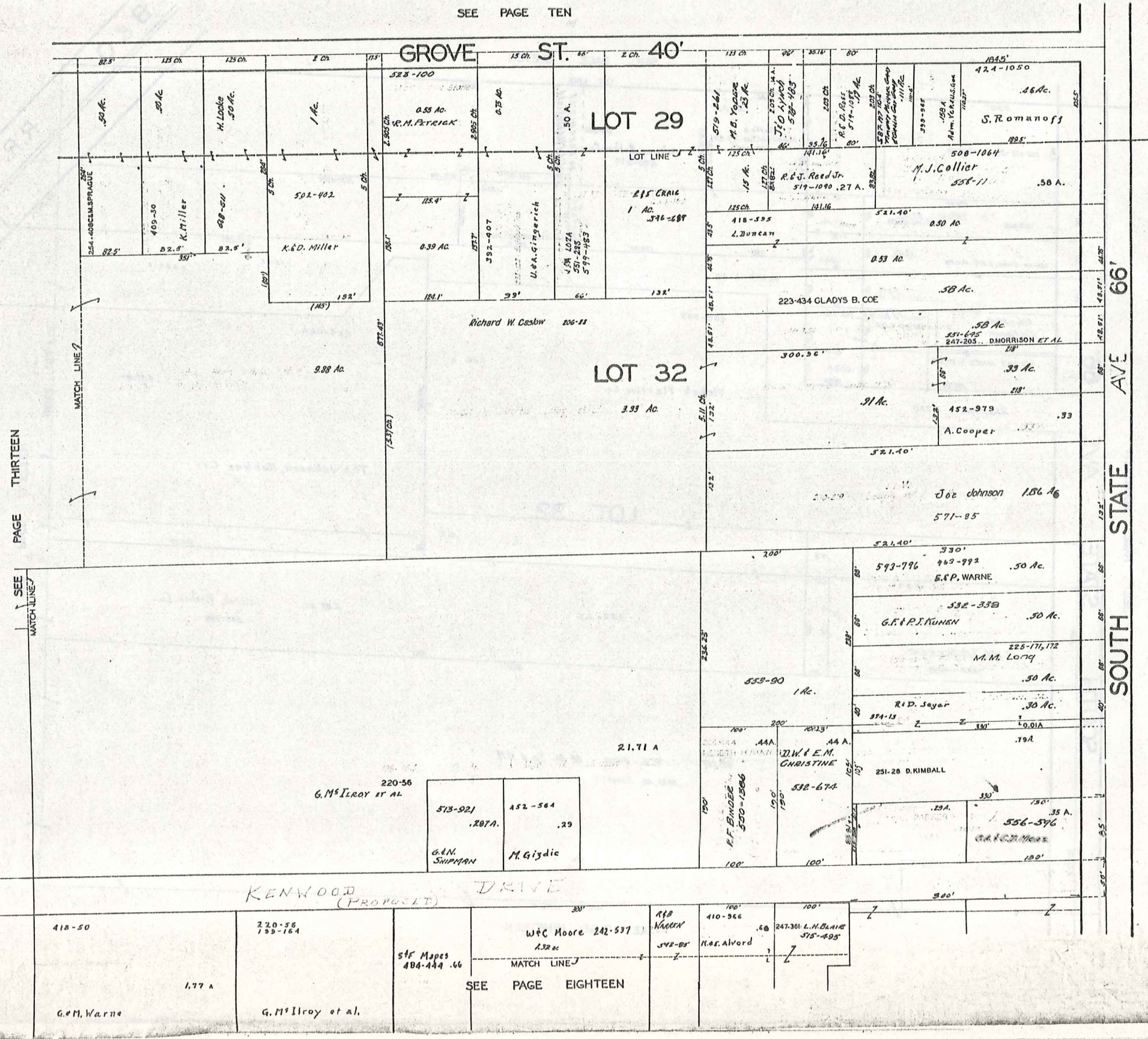


JAN. 1, 1977

SEE PAGE FOURTEEN

SEE PAGE SEVENTEEN

SEE PAGE TEN



PAGE THIRTEEN

SEE MATCH LINE

MATCH LINE

SEE MATCH LINE

SOUTH STATE AVE 66'

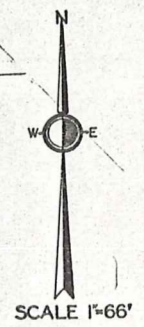
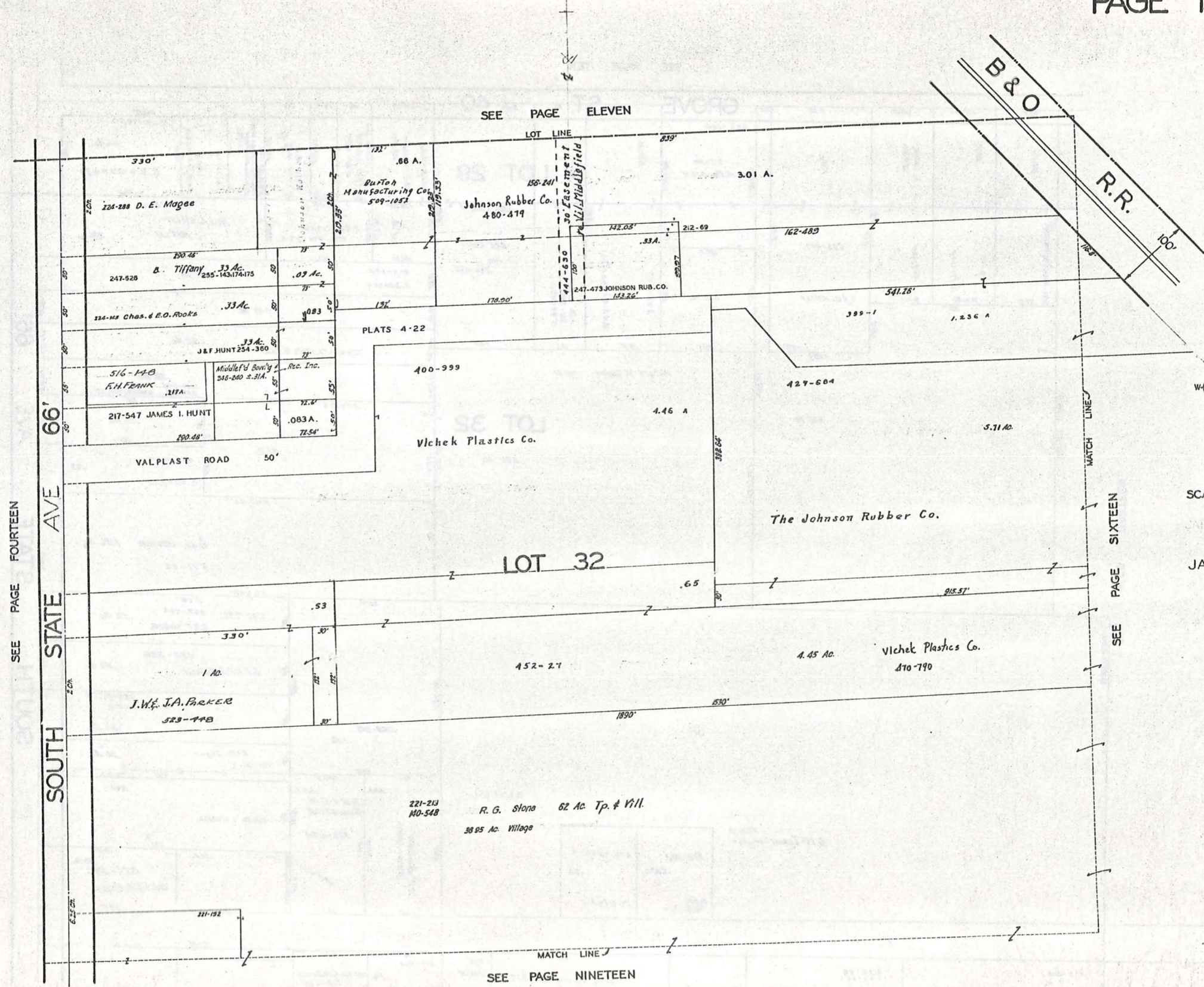
SEE PAGE FIFTEEN



SCALE 1"=66'

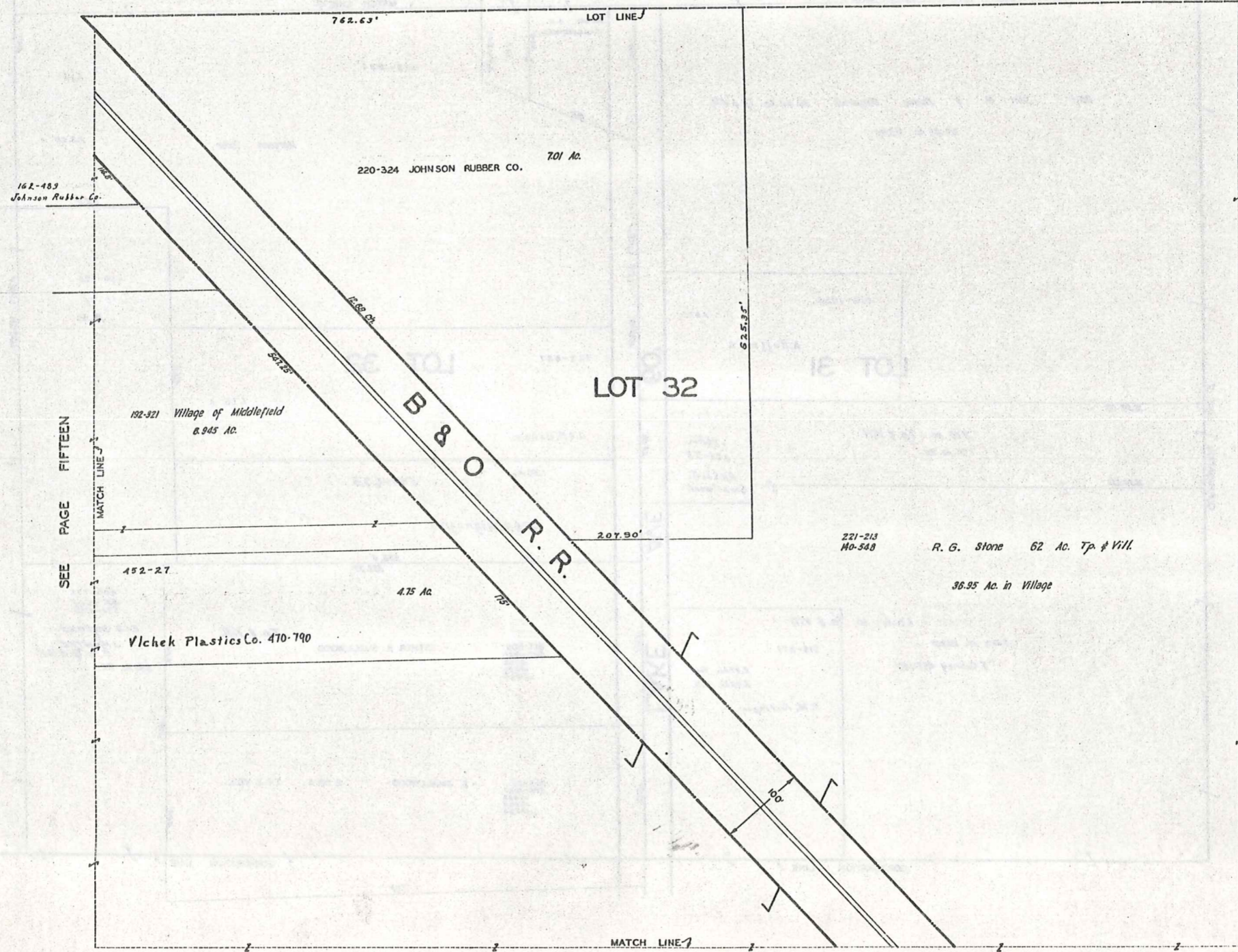
JAN 1, 1977

SEE PAGE EIGHTEEN



JAN. 1, 1977

SEE PAGE TWELVE



SEE PAGE FIFTEEN

SEE PAGE TWENTY

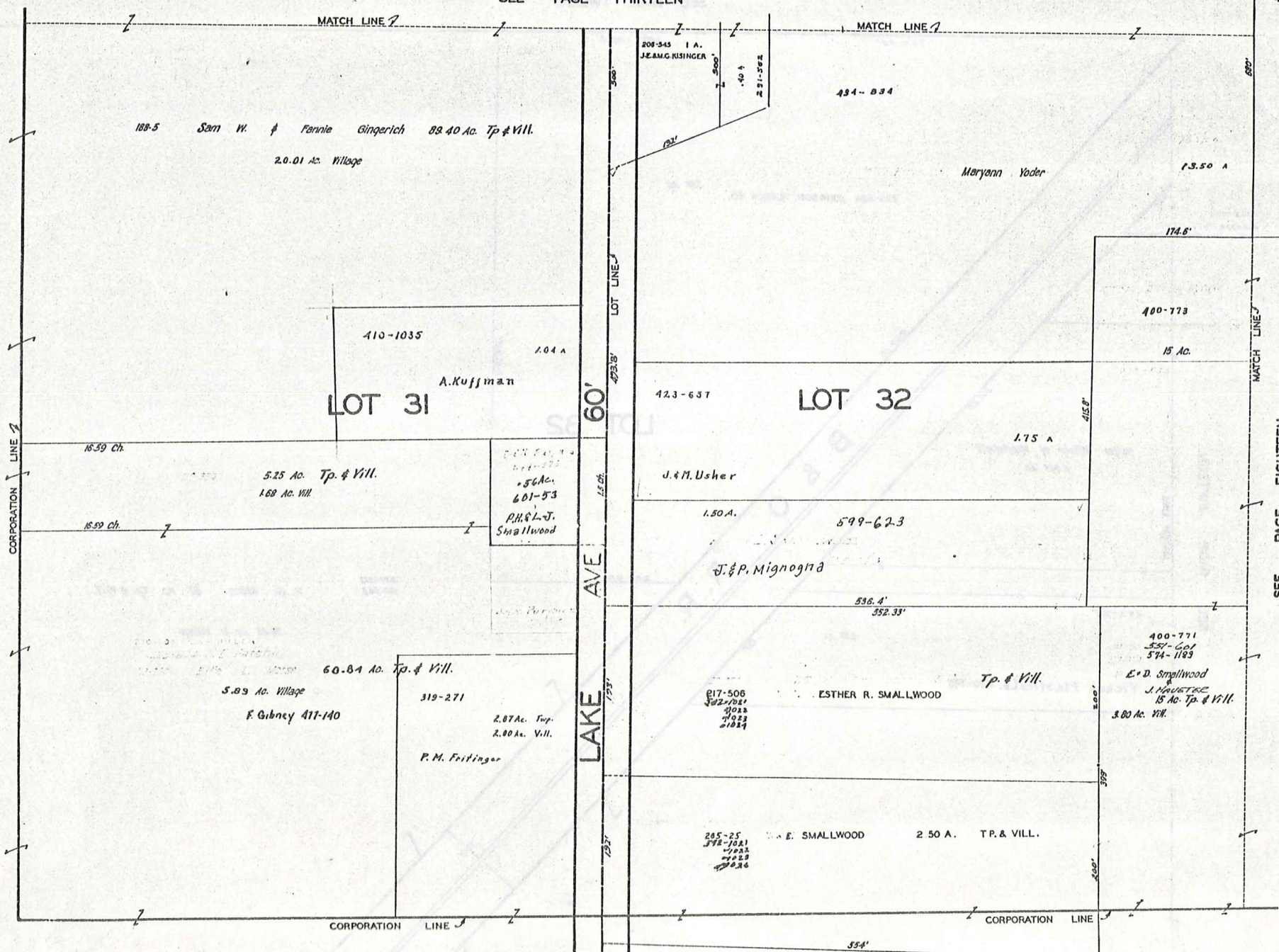


SCALE 1"=66'

JAN 1, 1977

MIDDLEFIELD VILLAGE

SEE PAGE THIRTEEN



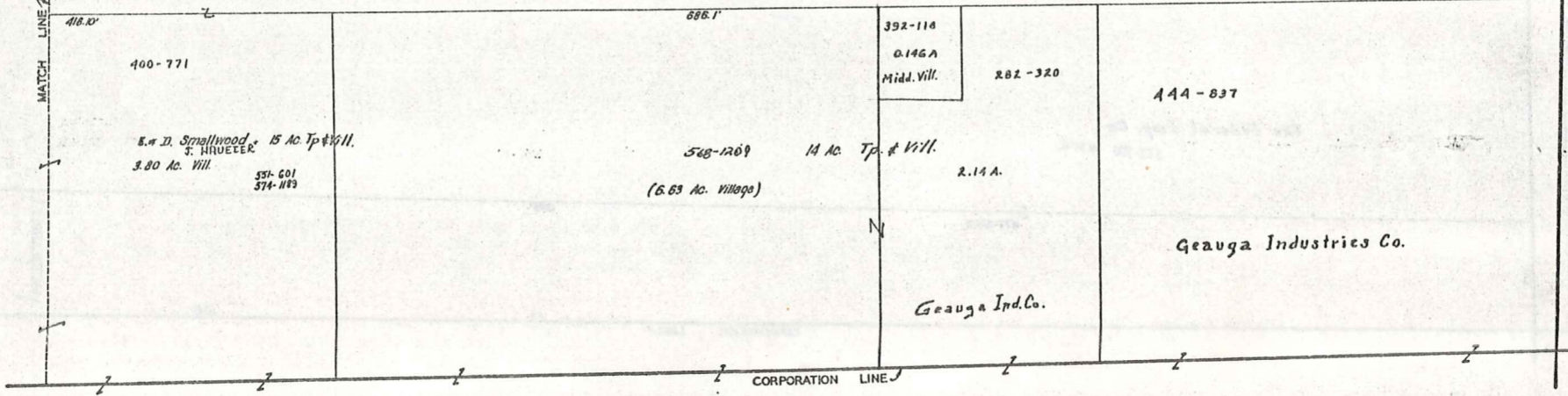
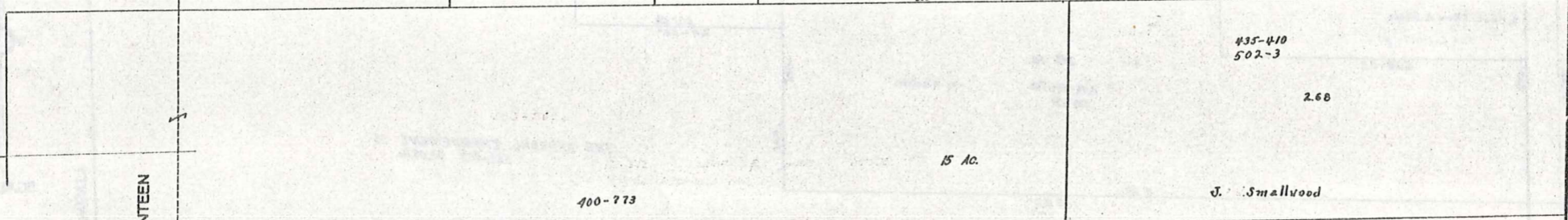
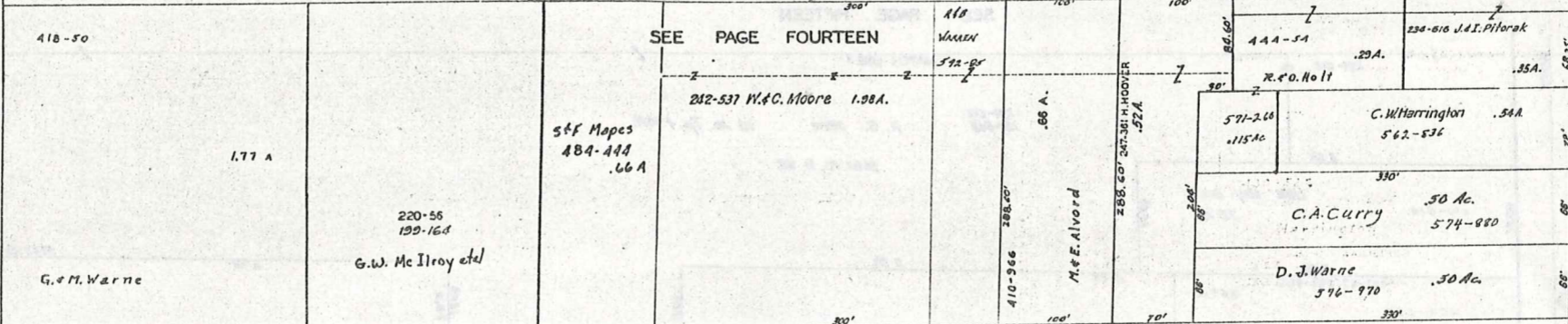
SCALE 1"=66'

JAN 1, 1977

SEE PAGE EIGHTEEN

MIDDLEFIELD VILLAGE

KENWOOD (PROPOSED) DRIVE 50'



SEE PAGE SEVENTEEN

SOUTH STATE AVE 66'

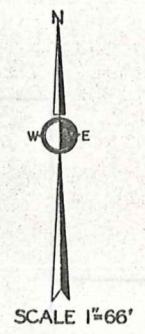
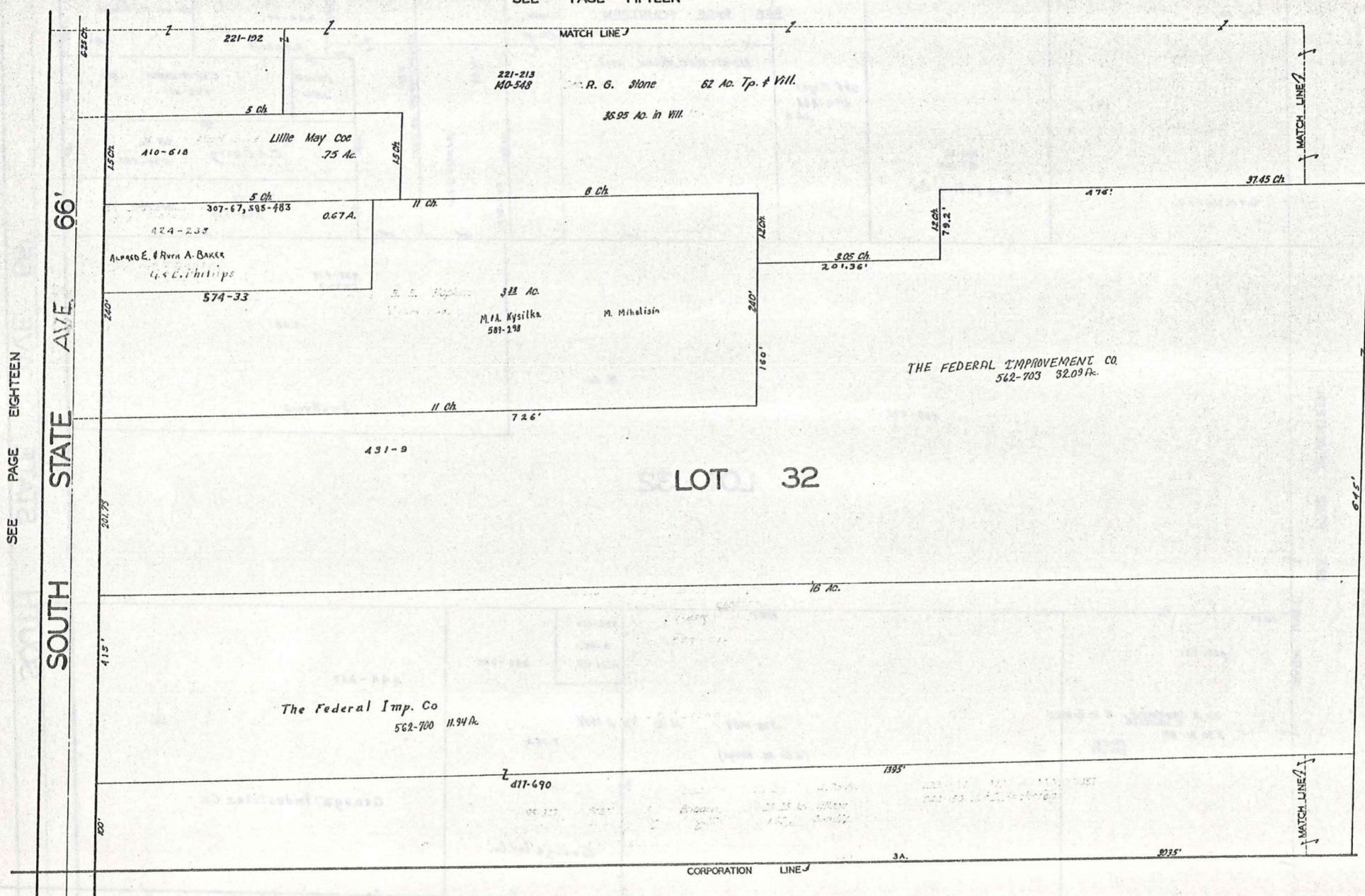
SEE PAGE NINETEEN



SCALE 1"=66'

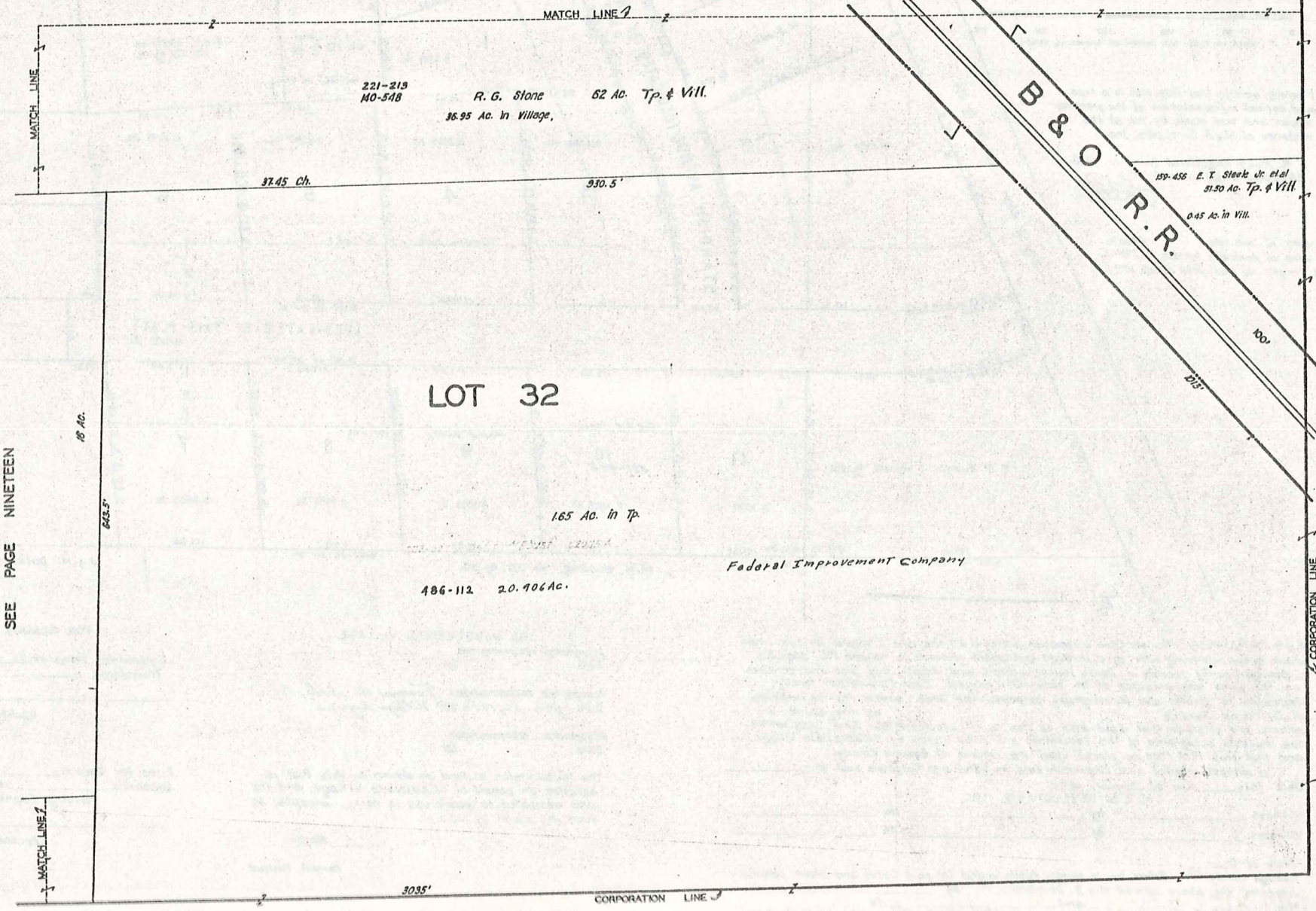
JAN 1, 1976

SEE PAGE FIFTEEN



JAN .1 , 1977

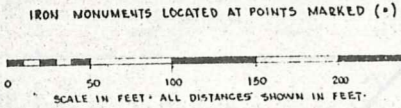
SEE PAGE SIXTEEN



SCALE 1"=66'

JAN 1, 1977

PLAT OF
M. & B. SUBDIVISION
IN
LOT NO. 22 & LOT NO. 29
MIDDLEFIELD VILLAGE
GEAUGA COUNTY OHIO
SCALE: 1 IN. = 50 FT.
IRON MONUMENTS LOCATED AT POINTS MARKED (•)



I hereby certify that this plat is a true and correct representation of the premises shown and was made by me at the instance of M. & B. Developers, Inc.

T. R. Root Registered Surveyor 2888
CHARDON OHIO, June 5, 1973

Total area of sub-lots 4.853 Ac.
Total area of dedicated streets 1.1789 Ac.
Total length of dedicated streets 1079.5 Ft.

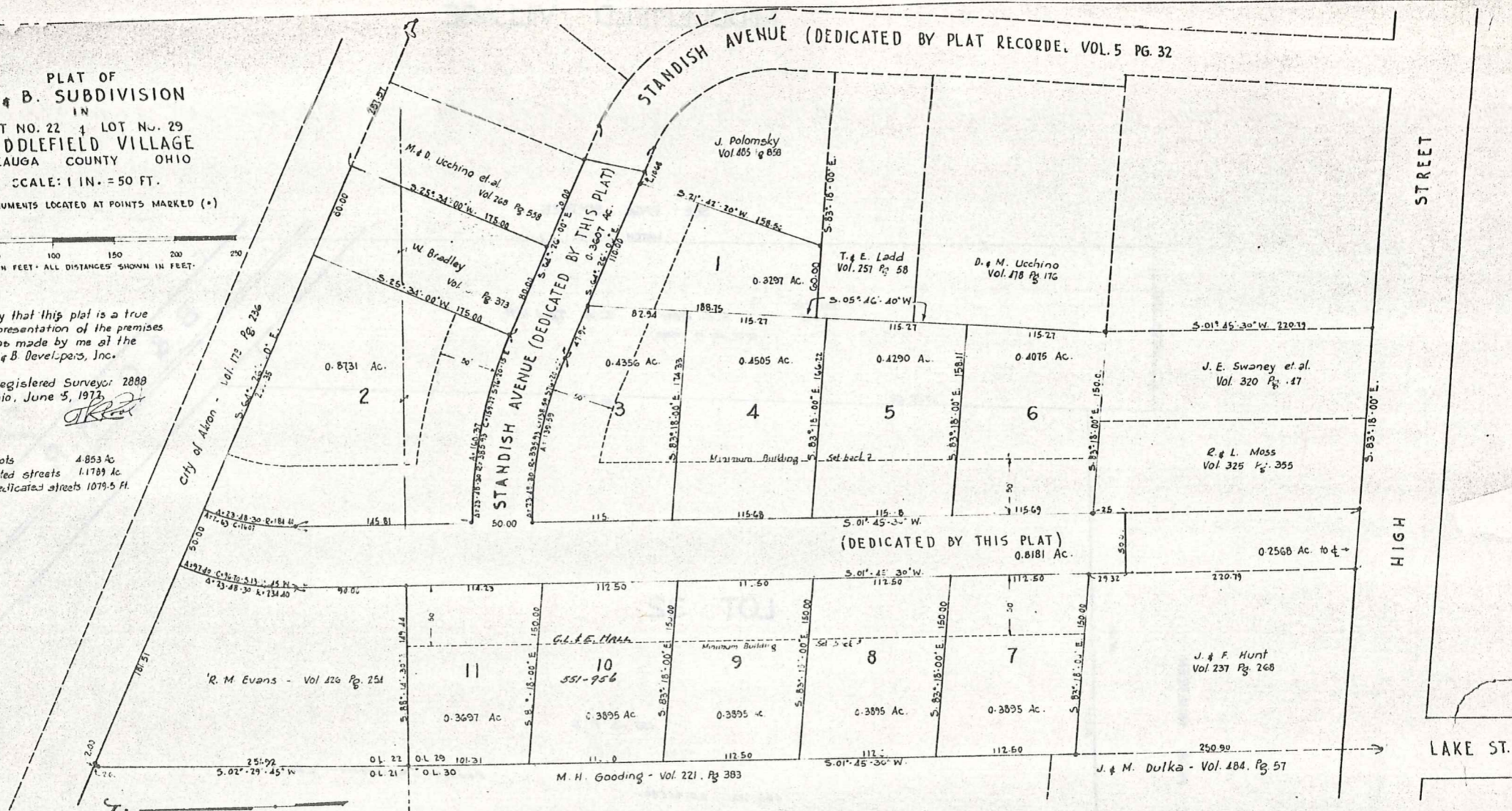
M. & B. DEVELOPERS, INC., an Ohio corporation, owner of all the land proposed for subdivision shown hereon, claiming title by or through instrument recorded in volume 126, page 225, of Geauga County records of deeds, hereby accepts and adopts this plat and certifies that the same was prepared at its order and request. Said Corporation hereby dedicates to public use for highway purposes the area within the boundaries of Standish Avenue as the same are shown, and certifies that said area is free of all encumbrances. Said Corporation now requests acceptance of this Dedication and Subdivision by Middlefield Village, and that this Plat then be placed upon the records of Geauga County.

In witness whereof said Corporation sets its hand and Corporate seal at Ohio this 24 day of January, 1973

by M. & B. DEVELOPERS, INC.
Witness _____ by _____ its _____
Witness _____ by _____ its _____

State of Ohio ss. Before me, a Notary Public in and for said County and State, personally appeared the above named M. & B. Developers, Inc. by _____ its _____ and _____ its _____ who acknowledged that they did sign the foregoing instrument, and that the same is the free act and deed of said Corporation and the free act and deed of each of them personally and as such officers. In testimony whereof I have hereunto set my hand and official seal at _____ Ohio this 24 day of January, 1973

Notary Public



FOR MIDDLEFIELD VILLAGE

Acceptance recommended _____
Date _____ for _____

Acceptance recommended Thomas A. Jack, P.E.
Date Jan. 24, 1973 for Village Engineer

Acceptance recommended _____
Date _____ for _____

The subdivision of land as shown on this Plat is accepted on behalf of Middlefield Village, and the land dedicated to public use is hereby accepted as such for said Village.

Mayor
Council President

Attest: _____ Clerk
by Ord. #481 adopted _____ 1973

FOR GEAUGA COUNTY

Entered for transfer _____ 1973
Transferred _____ 1973

Auditor of Geauga County

Filed for Record _____ 1973 Jan. 25
Recorded _____ 1973 Vol. _____ Page _____
Gauga County Plat Records

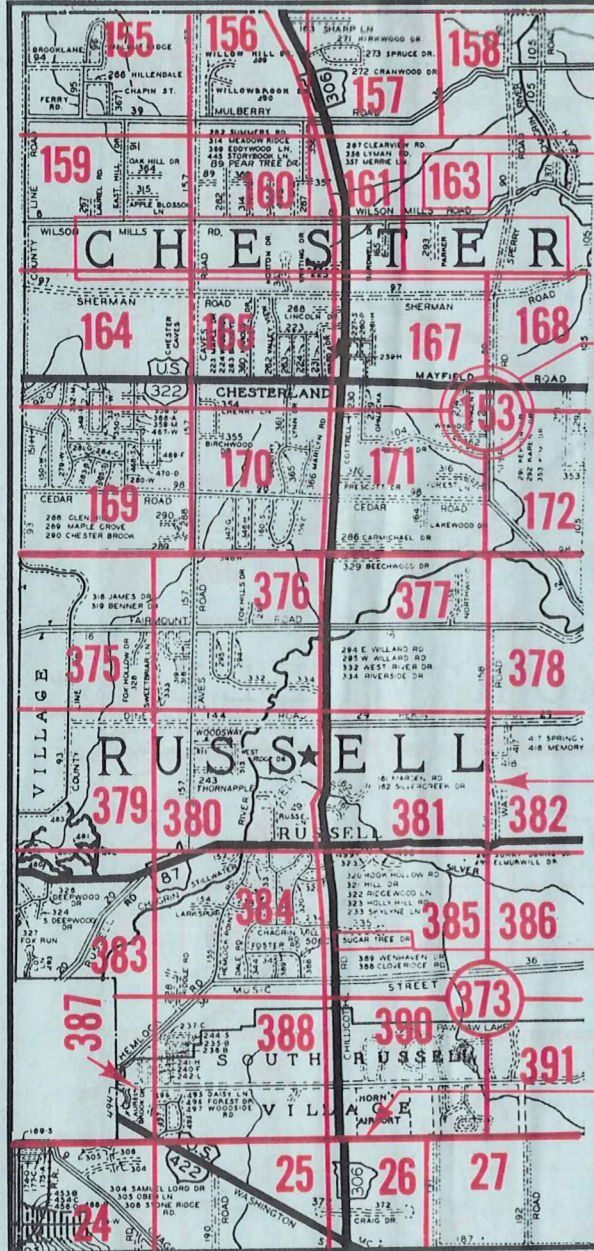
Recorder of Geauga County

#1

10-5
1 JANUARY 1973

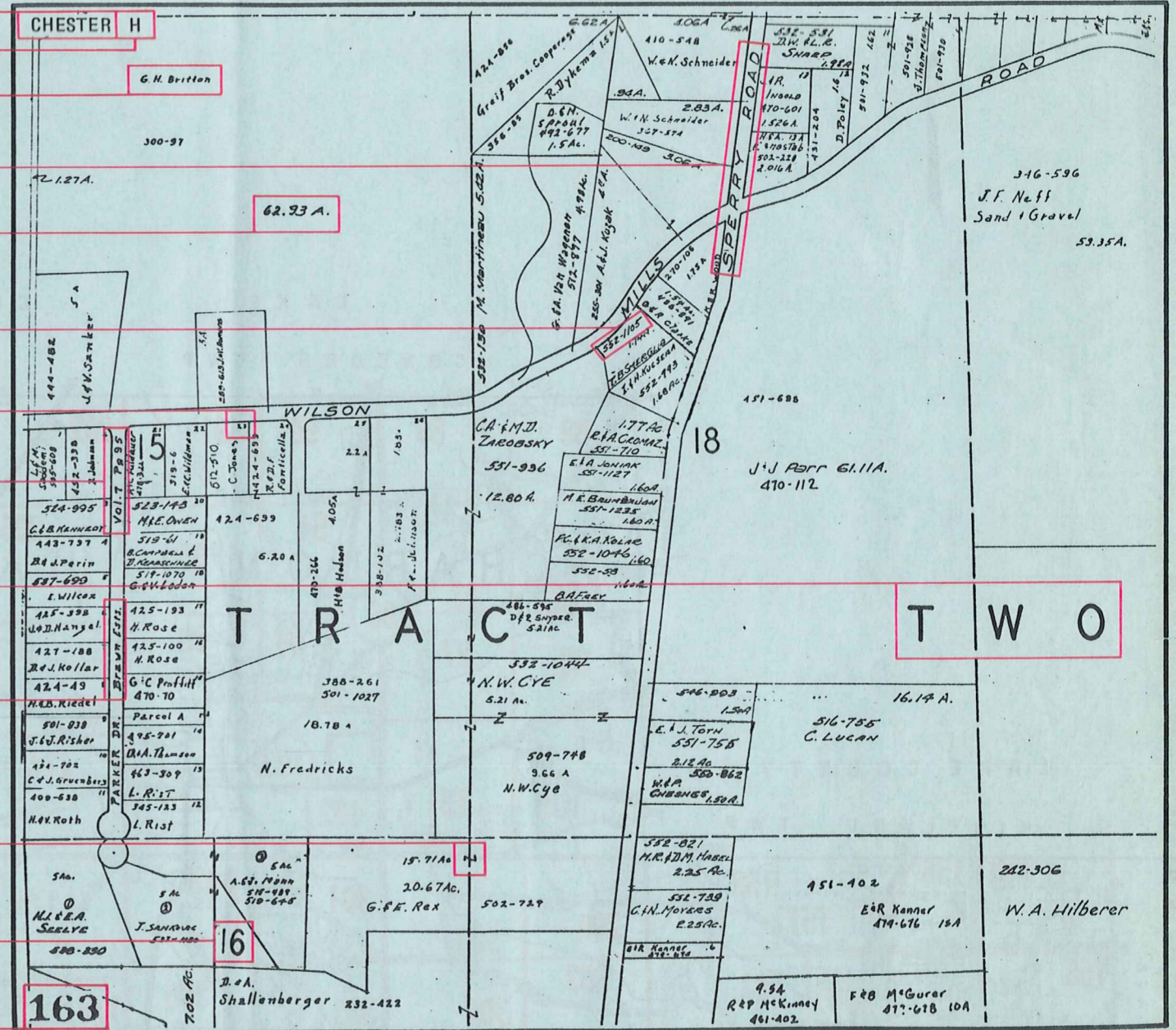
Explanation and Use Sheet for Geauga County, Ohio

SAMPLE (PARTIAL) COUNTY INDEX MAP



- Township Name
- Map Page Number (Or Letter)
- Owners Name
- Street Name
- Acreage
- Municipality Index Beginning Atlas Page Number
- Deed Book & Page
- Subdivision Lot Number
- Plat Book & Page
- Tract Number
- Atlas Page Boundary
- Subdivision Name
- Street Name
- Denotes Continuous Ownership
- Municipality Index Atlas Page Boundary
- Tract Lot Number
- Atlas Page Number

SAMPLE (PARTIAL) MAP PAGE



USE OF THE MAP VOLUME

1. LOCATE THE GENERAL AREA OF INTEREST ON THE COUNTY INDEX MAP, ATLAS PAGE 'B'.
2. A. IF PROPERTY IS IN A TOWNSHIP, NOTE THE ATLAS PAGE NUMBER. TURN TO THE PAGE INDICATED AND LOCATE SPECIFIC PARCEL OF INTEREST.
 - NOTE: ON SOME MAPS YOU MAY BE REFERRED TO A DETAIL SHEET SHOWING AN ENLARGEMENT OF THE AREA. THESE MAPS ARE FOUND AT THE END OF THE REGULAR MAP PAGES IN EACH TOWNSHIP EITHER IN ALPHABETICAL OR NUMERICAL SEQUENCE.
- B. IF PROPERTY IS IN A MUNICIPALITY, REFER TO THE TABLE OF CONTENTS, ATLAS PAGE 'C', AND NOTE THE BEGINNING ATLAS PAGE NUMBER FOR THE MUNICIPALITY OF INTEREST.
 - (1) TURN TO THE PAGE INDICATED. ON THIS PAGE WILL APPEAR AN INDEX MAP FOR THAT MUNICIPALITY.
 - (2) LOCATE SPECIFIC AREA OF INTEREST AND NOTE THE MAP PAGE NUMBER.
 - NOTE: DO NOT CONFUSE THE MAP PAGE NUMBER WITH THE ATLAS PAGE NUMBER IN THESE MUNICIPALITIES.
 - (3) FOLLOW EITHER ALPHABETICAL OR NUMERICAL SEQUENCE TO THE MAP PAGE INDICATED AND LOCATE SPECIFIC PARCEL OF INTEREST.